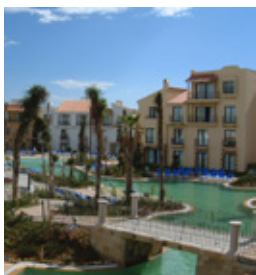
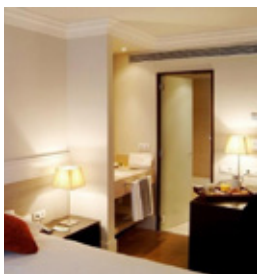
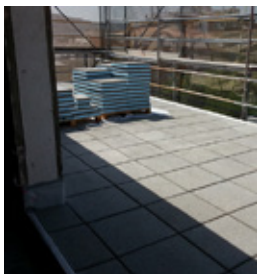
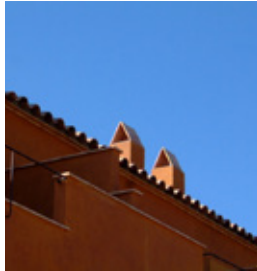


# ENVIMA

**Technical  
Consultancy  
in Building**

[www.envima.es](http://www.envima.es)





# WELCOME

**ENVIMA** is offering leadership in technical and/or economical management of any type of building projects. We rely on the **technical knowledge of our professionals** and on their experience within the area of promoting, managing and directing works. Nearly 20 years committed to efficiency and knowledge in the Real Estate and Construction market segments led **Enric Vijande Majem** to consolidate **ENVIMA**. Our technical services are focused on solving the needs of those who want to undertake a building project.

In **ENVIMA** we lead processes to **achieve client's goals** with complete success.

It's within this frame, where **ENVIMA** makes sense to the services offered: the processes are under control, the goal is accessible and client is always reported on the most relevant parameters.

**ENVIMA** acts saving money and efforts to the investor.

# ENERGY AND ENVIRONMENTAL SERVICES

The concern for the environment is increasingly high and it is clear that buildings have a big impact. On one hand, **ENVIMA** is able to apply various environmental assessment tools that help to reduce these negative impacts on the environment, beyond the focus on the energy performance of buildings. On the other hand, in **ENVIMA** we use energy simulation tools as the way that allows us to evaluate, validate and optimize energy saving strategies, minimizing costs and environmental impacts, always with a sustainable approach.

- ▶ Producing the Energy Evaluation Report (according to RD 235/13).
- ▶ Consulting on Efficiency Improvements and / or Energy Renovation.
- ▶ Implementing continuous improvement of Energy Efficiency, according to ISO 50001.
- ▶ Environmental Assessment of Buildings using the tool VERDE of GBCe.
- ▶ Application of passive and active solutions for nZEB buildings.



# PROJECT MANAGEMENT

- ▶ Leadership and coordination of the technical project.
- ▶ Documentary audit and verification projects.
- ▶ Feasibility analysis and economical management.
- ▶ Planning of works and contracting management.
- ▶ Coordination of relationships of all the companies involved.

**ENVIMA** starts managing from a client's "needs plan"; then gears human and technical forces to the goal of the project and achieves money and time savings. Client is continuously reported. The best alternatives are proposed for the proper conduct of an operation. Ultimately, **ENVIMA's** priority is to **reach the same goals as the client**:

- ▶ Establishing the **best strategy** to develop a project.
- ▶ Meeting the **expected scheduled dates**.
- ▶ Fulfilling the **implementation costs** to the forecasts made.
- ▶ **Controlling** of direct costs of the work.



# CONSTRUCTION MANAGEMENT

In Spain, the L.O.E. (Law 38/1999) and the **Technical Building Code** (R.D. 314/2006) impose on the promoter the need of a technical team and set up the requirements for the provision of these services. **ENVIMA** offers quality and experience in the Directorate for Implementation of Works, at the same time that resources are available to manage **services of Projects and Directing Works**:

- ▶ Monitoring of the correct interpretation of the **executive project**.
- ▶ Verification **of set outs and materials** of the building process.
- ▶ **Proposal for improvements** in materials and constructive solutions.
- ▶ Control of the final fittings of the work and their **quality**.

**ENVIMA** offers also Consultancy Services sharing the experience of 20 years in on-site works: technical assistance in project and on site processes – Technical diagnostics and reports  
- Certifications.



# HEALTH AND SAFETY ON SITES

In Spain, the R.D. 1627/1997 regulates the conditions for Occupational Health and Safety related to construction and **points to the Promoter as responsible** for starting the chain of command. **ENVIMA** ensures the promoter the certainty of going after **accomplishing those standards** and offers peace of mind covering their responsibilities. **ENVIMA constantly evaluates and reports** what happens:

- ▶ Write Health and Safety Studies for works.
- ▶ Coordination of H&S during the phase of project.
- ▶ Coordination of H&S during the Execution of works.
- ▶ Ensure implementation of the Principles of Prevention.
- ▶ Approve the H&S Plans written by contractors.

**ENVIMA** is able to export Health & Safety Spanish standards to other countries, as their main aim is to avoid accidents.



# QUALITY CONTROL OF PROCESSES

Quality is the engine for all **ENVIMA**'s work processes, both the services offered, and the client's Real Estate development (implementation of Decree 375/1988 and CTE-RD.314/2006). **Cycles of continuous improvement** are the priority for **ENVIMA** and allow us to evolve in each assignment, optimizing services and **improving procedures** for the control of works:

- ▶ **Control Program** for processes and materials.
- ▶ **Schedule** of modifications and/or improvements in construction.
- ▶ **Reception Control** of Products and Systems.
- ▶ **Checking sheets** for Professional Registration.

**ENVIMA** gears the Quality Control processes according to the prescriptions set at the beginning. **ENVIMA** settles a Control Plan for the works, divided in different items and defining their checking frequencies. The follow up the Control Plan is done through inspections during which all items are checked.





# TRAINING AND DISSEMINATION

In **ENVIMA** we want to share our knowledge and expertise, as well as learn from others every day. Adding value by **transferring knowledge** and collaborating in research and debate teams leads us to various types of actions:

- ▶ Participating in **online** courses on Project Management.
- ▶ Developing **lectures** on Sustainability in Universities.
- ▶ Teaching Sustainability on a **University Master**.
- ▶ Drafting of documents on Innovation in Construction.
- ▶ Collaborating in software development for architecture.

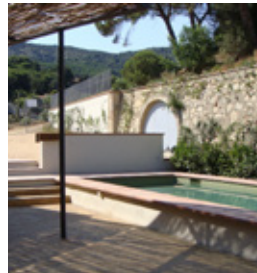
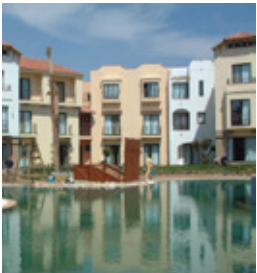
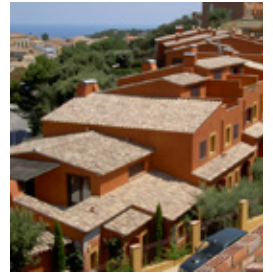
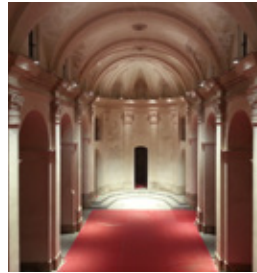
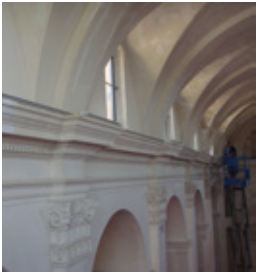
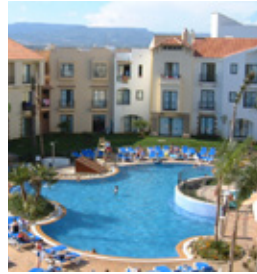
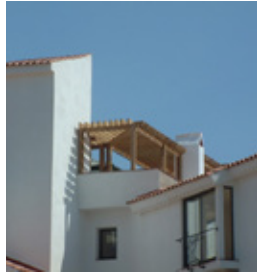


# INTERNATIONAL CONSTRUCTION SERVICES

**ENVIMA** develops its services leading to **internationalization**. Communications and mobility do not currently have limits, which suggest a Real Estate development beyond our everyday activity. In areas other than our own, the **reliability and experience** that **ENVIMA** provides to their clients, attend them to manage their investments and to give them the stable foundation needed:

- ▶ Providing **expertise** and knowledge abroad.
- ▶ Providing an **overall view** of investment in property.
- ▶ Providing **technical soundness** of the construction processes.
- ▶ Providing the **ability to manage** costs and delivery times.
- ▶ Providing **settled processes** adaptable to new environments.





# Experts in life cycle of buildings



**Enric Vijande Majem**  
Sant Cugat del Vallès  
[www.envima.es](http://www.envima.es)